



GOLDHURST MANSIONS
GOLDHURST TERRACE
SWISS COTTAGE
NW6 3HY

PRICE: £4,350 PCM

UNFURNISHED

We are pleased to offer this true mansion apartment, with four enormous bedrooms which was recently refurbished. Ideal for either a family or sharers as an Additional HMO licence in place

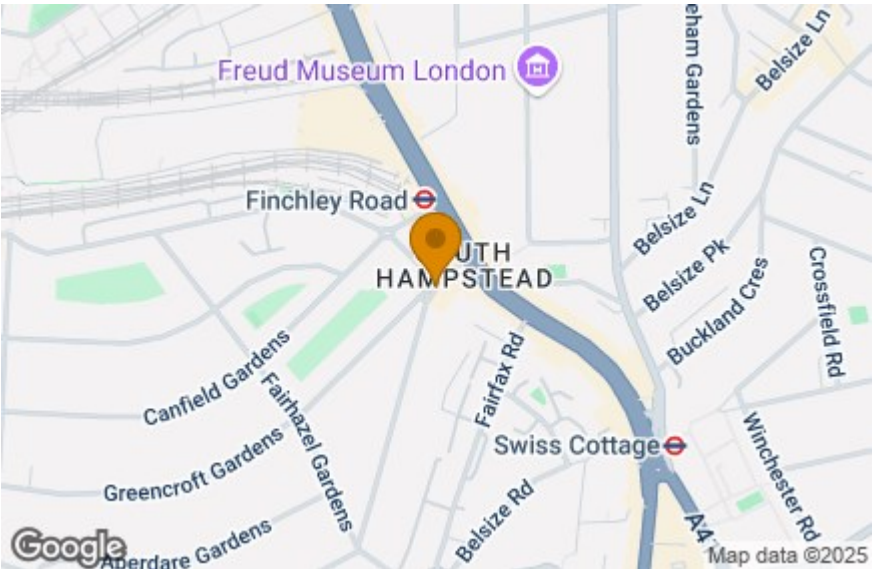
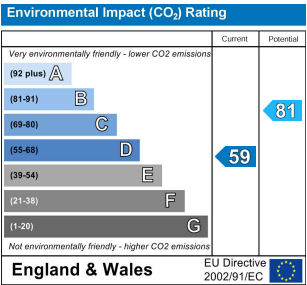
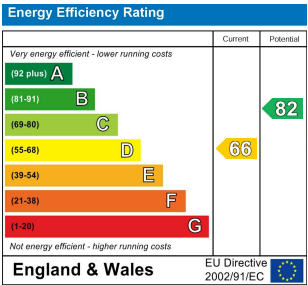
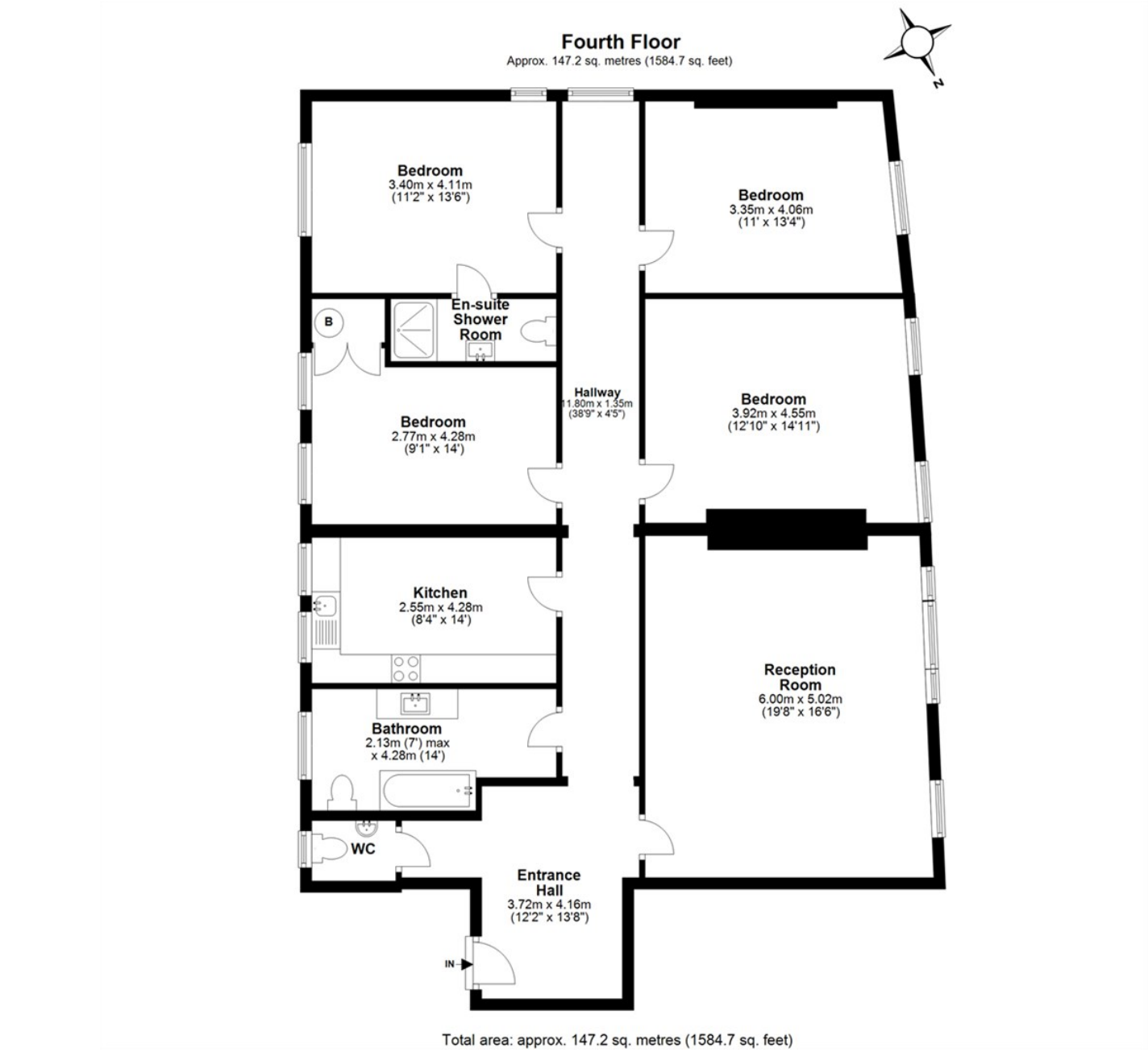
Set within a beautiful Victorian Mansion block with a passenger lift and Communal Garden, the flat is on the 4th floor, entered via a large hallway and all rooms are spacious with high ceilings, 4 bedrooms, a luxury bathroom and en suite shower room, and guest WC. Very Large reception room and luxurious modern kitchen.

Located within a 1-minute walk to Finchley Road tube station and shopping facilities. A very large, rarely available four-bedroom apartment in the heart of the much sought-after South Hampstead.

Must be seen



FEATURES:



IMPORTANT NOTICE

Whilst every attempt has been made to ensure the accuracy of these details and floor plans contained here, measurements of doors, windows and rooms are approximate and no responsibility is taken for any error, omission or misstatement. These plans and details are for representation only as defined by RICS code of measuring practice and should be used as such by any prospective tenant. Not to scale. Copyright: RHW Estates